



MONTGOMERY MOVIE THEATRES

By Mike Rivest <http://movie-theatre.org/contact.htm>

Art **CLOSED**

AKA: State, Nu Art, Ritz
155 Highland
1952-1955
This theatre catered to Afro-Americans

Auto Movies **CLOSED**

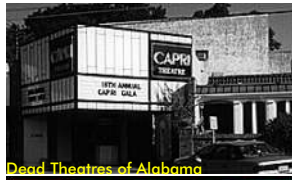
? 1941-? 1947

Capitol **CLOSED**

1928-? 1929

Capri **OPEN**

AKA: Clover
1045 East Fairview Avenue
[http:// capritheatre.org/](http://capritheatre.org/)
1962-



Dead Theatres of Alabama



Carmike Eight

AKA: Nova 8
1755 Eastern
? 1990-2002
Carmike Owned this theatre.



Carver **CLOSED**

500 Holt South
? 1942-? 1960
590 seats
This Theatre catered to Afro-Americans



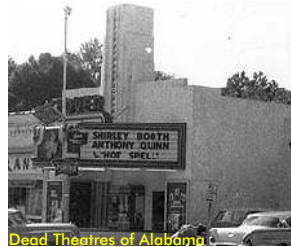
Dead Theatres of Alabama

Charles **CLOSED**

35 Commerce
? 1941-? 1970
Wilby Kincey owned this 900-seat theatre.

Clover

AKA: Capri
1045 East Fairview Avenue
? 1941-? 1963
666 seats



Dead Theatres of Alabama

Colonial **CLOSED**

? 1919-? 1927

Coosa **CLOSED**

? 1947-? 1956

Dexter **CLOSED**

? 1934-? 1938

Dixie **CLOSED**

? 1931

Eastdale Eight **OPEN**

? 1980-
101 Eastdale Circle
Opened with 3 screens and expanded in the early 1990's to 8 screens
Owners:
1980 Martin Theatres
1985 Carmike



Carmike Cinematour

Ebony Drive-In **CLOSED**

? 1956-? 1960
400 cars

Empire **CLOSED**

17 Commerce
? 1910-? 1916

Empire **CLOSED**

1 Montgomery
? 1919-? 1975
855 seats
Owners:
1940 Wilby Kincey
1975 Martin Theatres



Dead Theatres of Alabama

Empress **CLOSED**

? 1912-? 1915

MONTGOMERY MOVIE THEATRES

By Mike Rivest <http://movie-theatre.org/contact.htm>

Fairview Drive-In **CLOSED**

? 1950-? 1975

536 cars

Owners:

1950 Wilby Kincey

1975 ABC Florida State

Famous **CLOSED**

? 1915-? 1916

This Theatre catered to Afro-Americans

Gem **CLOSED**

? 1928-? 1930

This Theatre catered to Afro-Americans

Globe **CLOSED**

? 1912

Grand **CLOSED**

? 1908-? 1946

Highland **CLOSED**

? 1949-? 1956

Wilby Kincey owned this 700-seat theatre.



Dead Theatres of Alabama

Jet Drive-In **CLOSED**

? 1953-? 1983

260 cars

Mall **CLOSED**

? 1971-? 1985

ABC Florida State owned this theatre, Martin Theatres twinned it in the early 1980's, it has been demolished for the expansion of the parking lot. It was able to show 70MM films.



Dead Theatres of Alabama

Martin Twin I & II **CLOSED**

? 1971-? 1990

Martin Theatres owned this theatre.

Mc Donland's **CLOSED**

AKA: Bijou, Majestic

? 1903-? 1922

Mecca **CLOSED**

? 1930-? 1935

Montgomery **CLOSED**

? 1860-? 1907

Built as live theatre in 1860. Claims Dixie first written and performed there. Doing vaudeville by 1906. Showed movies as part of Vaudeville performances in January of 1906, which seems to be the first reference. Closed as theatre in 1907



Dead Theatres of Alabama

Montgomery Drive-In **CLOSED**

Hwy 31

? 1947-? 1975

350 cars

in 1975 ABC Florida State theatre owned this drive-in

Movies 4 **CLOSED**

? 1985-? 1995

Owners:

1985 Martin Theatres

1995 Carmike Cinemas

31 listings

April 17, 2005