

LITTLE ROCK SUBURBAN

United States of America | Arkansas | Little Rock | Suburban

PULASKI COUNTY JACKSONVILLE

Jacksonville Drive-In

CLOSED

? 1955-? 1969
350 cars.

Jaxon **CLOSED**

? 1945

Strand **CLOSED**

Main

? 1950-? 1955
250 seats.

NORTH LITTLE ROCK

Broadway Drive-In **CLOSED**

? 1964

Carmike 7 **CLOSED**

4000 McCain Blvd
1995-2002

Carmike Cinemas owned this theatre.



Joy One **CLOSED**

1971-? 1971

Juroy **CLOSED**

1733 Pike

? 1950-? 1955

638 seats.

Levy Twin **CLOSED**

300 Pike Ave

? 1990

Liberty **CLOSED**

313 Main

? 1945 ? 1955

330 seats.

Mc Cain Mall Cinema I & II

CLOSED

? 1975-1986

General Cinemas owned this theatre, which was their only theatre in the state.

North Little Rock Drive-In

CLOSED

Highway 70

? 1945-? 1964

450 cars.

Malco owned this drive-in

Park **CLOSED**

406 Ark-Mo highways

1941-? 1975

700 seats.

Park Till **CLOSED**

Main

? 1955

750 seats.

Owners:

1961 United Theatres

1969 Rowley United

Plaza **CLOSED**

? 1930-? 1935

Princess **CLOSED**

? 1925-? 1955

774 seats.

Rialto **CLOSED**

205 Main

? 1935-? 1969

850 seats.

Owners:

1961 United Theatres

1969 Rowley United

Ritz **CLOSED**

? 1945

Scenic Drive-In **CLOSED**

? 1955-? 1961

500 cars.

Tandy 10 **OPEN**

4188 E McCain Blvd

? 1995-

Cinemark owns this theatre.



Twin Drive-In **CLOSED**

? 1969-? 1985

500 cars.

Rowley United owned this drive-in

UA Lakewood Village 8

OPEN

2939 Lakewood Village Dr

1986-

Owners:

1986-2002 United Artists

2002-2008 Regal Cinemas

2008- Dickinson



LONOKE COUNTY

CABOT

Bailey **CLOSED**

S. Bailey Av.

? 1950-? 1955

350 seats.

Cabot **CLOSED**

? 1940-? 1950

250 seats.

School Auditorium **CLOSED**

? 1940

300 seats.

Silver Screen Cinema 4

OPEN

1 Cinema Blvd.

? 2003-

Matt Smith owns this quad.

Silver Screen Theatre

CLOSED

100 Cinnamon Lane

? 2003-? 2003

Matt Smith owned this theatre.

CARLISLE

Lyle **CLOSED**

? 1945-? 1950

Rex **CLOSED**

? 1940-? 1945

250 seats.

Uptown **CLOSED**

? 1930-? 1935

200 seats.

ENGLAND

Best **CLOSED**

Front St.

? 1935-? 1961

Jones and Busby Theatres owned this 580-seat theatre.

New **CLOSED**

Hinkley St.

? 1940-? 1955

460 seats.

LONOKE

New **CLOSED**

Highway Av.

? 1940

460 seats.

Oak **CLOSED**

Highway Av.

? 1955

Jones and Busby Theatres owned this 460-seat theatre.

Rex **CLOSED**

? 1935

PERRY COUNTY

BIGELOW

Rainbow (Portable) **CLOSED**

? 1950

200 seats.

SALINE COUNTY

BENTON

Big 4 Drive-In **CLOSED**

? 1955-? 1969

400 cars.

Imp **CLOSED**

AKA: Royal

111 S. Market

? 1930-? 1945

597 seats.

New **CLOSED**

? 1945-? 1961

Jones and Busby Theatres owned this 300-seat theatre.

Royal **OPEN LIVE**

AKA: Imp

111 S. Market

? 1950-

This downtown theater has been in constant operation since the 1920s. It opened as the Imp, on Market Street. In the 50's the owners acquired the neon sign from the Royal Theatre in Little Rock and remodelled the entrance. In the 1990s the family owned building was sold to Jerry Van Dyke (Dick's brother and Luther on 'Coach'). Jerry opened a soda shop next door and operated the theater as a joint movie house/live venue. When Jerry moved to Mexico, he gave the theater to a local community theater, who assumed the name the Royal Players.

597 seats. (twin theatre late 1970's-late 1980's)

Owners:

1961 Rowley United

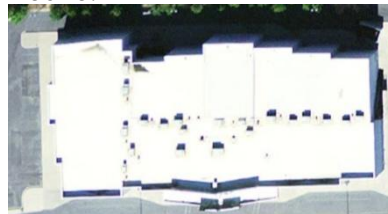
1980 United Artists

Tinseltown USA 14 **OPEN**

17314 I-30

1998-

Cinemark owns this stadium-seating theatre.



Victory **CLOSED**

? 1945-? 1950

354 seats.

42 listings

May 1, 2005

Last update 2008-10-18