



POCATELLO MOVIE THEATRES

By Mike Rivest <http://movie-theatre.org/contact.htm>

BANNOCK COUNTY CHUBBUCK

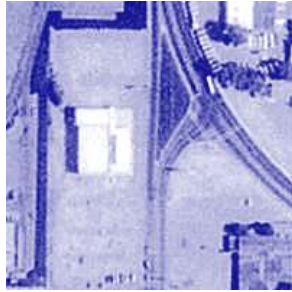
Carmike 7 **OPEN**

AKA: Starlite 7

4031 Poleline

? 2000-

Carmike Cinemas owns this cinema; it became a discount house in 2005 when the Pine Ridge cinemas opened.



Pineridge 10 **OPEN**

4333 Yellowstone

2005-

Carmike Cinemas owns this stadium-seating cinema.



Star Lite Drive-In **CLOSED**

? 1955-? 1980

538 cars

Starlite

AKA: Carmike 7

4031 Poleline

? 1990

Opened with 3 screens and expanded to 7 screens by 1998

Owners:

1990 Excellence Theatres

Corporation

1998 Carmike Cinemas

DOWNEY

Downey **CLOSED**

25 N Main

? 1935-2002

275 seats

GRANDVIEW

Grandview (Portable)

CLOSED

? 1940-? 1945

LAVA HOT SPRINGS

Resort

? 1935-? 1950

230 seats

MC CAMMON

McCammon **CLOSED**

? 1940-? 1945

POCATELLO MOVIE THEATRES

By Mike Rivest <http://movie-theatre.org/contact.htm>

POCATELLO

Almeda Plaza Triplex

CLOSED

1010 Yellowstone Ave
? 1980-2005

Owners:

1980 Mann

1985 others

1995 Carmike Cinemas

It closed when the Pineridge cinemas opened.

American **CLOSED**

AKA: New York

440 East Center

December 6, 1917-? 1925

800 seats

Auditorium **CLOSED**

1892-? 1945

After fire destroyed the Old Opera House in 1892, plans were made and executed to build a new Pocatello Opera House on the same site. Built at a cost of more than \$20,000, construction was supervised by Col. G.A. Hannaford. There was another fire in 1899, and the building was rebuilt in 1900.

Known throughout most of it's life as the Auditorium Theatre, the facility had seating for 850 - 325 on the main floor, 250 in the first balcony and 275 in second balcony. Located at 237 or 239 E. Center, the theater operated under several names - the last city directory entry shows the Paramount at this address.

Fire again damaged the building in 1939, at which time the third story was removed while the two lower stories were repaired and renovated, after which it never again served as an entertainment venue. Today the site is occupied by a furniture store.

Capitol **CLOSED**

155 S. Main

January 1, 1924-1969

Fox Intermountain owned this 401-seat theatre 1940-1955

Chief **CLOSED**

217 N Main

1938-1984

1,244 seats

Owners:

1938 Fox Intermountain Theatres

1975 Mann

This theatre burned on March 20, 1993 during restoration.



Crown **CLOSED**

AKA: Orpheum (II)

151 S Main

April 14, 1916-1917

704 seats

Grand **CLOSED**

AKA: Lyric, Princess

124 S Main

July 1909-1912

Lyric **CLOSED**

AKA: Grand, Princess

124 S Main

October 9, 1905-1909

New York **CLOSED**

AKA: American

440 East Center

January 1st, 1917-1917

800 seats

POCATELLO MOVIE THEATRES

By Mike Rivest <http://movie-theatre.org/contact.htm>

Olympic **CLOSED**

AKA: Strand
155 N Main
July 12, 1909-1920

Orpheum (I) **CLOSED**

250 W Center
1908-1917

Orpheum (II) **CLOSED**

AKA: Crown
151 S Main
April 2nd, 1917-1973
704 seats
Owners:
1925 Carrothers & Archibld
1930 others
1940 Fox Intermountain
1975 Mann

Pocatello **CLOSED**

? 1990
Excellence Theatres Corporation
owned this cinema.

Pocatello Drive-In

CLOSED

? 1950

Pond Student Union

CLOSED

? 1990-? 1998

Princess **CLOSED**

AKA: Grand, Lyric
124 S Main
June 15, 1912-1920
Became retail space in 1920

Reel 2 **OPEN**

310 E Oak St
? 2000-

Rex **CLOSED**

415 E Center
1915-? 1925

Rialto **CLOSED**

415 E Center
? 1935-? 1950
625 seats

Roxy **CLOSED**

? 1945

Strand **CLOSED**

1920-1938
500 seats
Owners:
1925 Carrothers & Archibld
1930 Wesco Corporation
1935 others

Sunset Drive-In **OPEN**

4666 N Old Highway 91
? 1955-
250 cars



POCATELLO MOVIE THEATRES

By Mike Rivest <http://movie-theatre.org/contact.htm>

BINGHAM COUNTY

ABERDEEN

Aberdeen Ward **CLOSED**
? 1940-? 1945

Duncan **CLOSED**
? 1935
250 seats

Star **CLOSED**
? 1940-? 1955
380 seats

BLACKFOOT

Alladin **CLOSED**
? 1930

Idaho **CLOSED**
67 East Pacific
? 1950-? 1975
Owned by De Morbaunt & Drennen

Motor-Vu Drive-In **CLOSED**
? 1950-? 1985
490 cars



New Mission **CLOSED**
? 1935-? 1945
De Morbaunt & Drennen owned this
350-seat theatre

Nuart **LIVE**
195 N Broadway
? 1935-? 1985
625 seats
Now a playhouse, was owned by De
Morbaunt & Drennen

Orpheum **CLOSED**
? 1925
Paul Demordaunt owned this theatre.

Plaza Twin **CLOSED**
Riverside Plaza
? 1990-? 1995
Owner in 1995: Carmike Cinemas

Rialto **CLOSED**
? 1925
Paul Demordaunt owned this theatre.

Roxy **CLOSED**
200 block of North Broadway
? 1950

FIRTH

Melba **CLOSED**
Main
? 1940-? 1950
325 seats

SHELLEY

Virginia **CLOSED**
186 S State
? 1930-? 1990
450 seats

SPRINGFIELD

Springfield **CLOSED**
? 1940-? 1945

POWER COUNTY

AMERICAN FALLS

Iris **CLOSED**
? 1930-? 1950
400 seats

46 listings
January 14, 2006