



HAYS MOVIE THEATRES

By Mike Rivest <http://movie-theatre.org/contact.htm>

ELLIS COUNTY ELLIS

Crystal **CLOSED**

? 1930-? 1955
396 seats

Renovated in the early 1930's
Baker, A. F., Circuit owned it 1945-1950

HAYS

Fox **CLOSED**

1202 Main
April 12, 1950-? 2002
1,037 seats

Owners:
1955 Fox Midwest Amusement Corp.
1961-1964 NT & T Amusement Corp.
1969 Fox-Intermountain-Midwest
Theatres
1975-1980 Mann Theatres
Corporation of California



Hays **CLOSED**
2000

Hays Drive-In **CLOSED**

? 1950-? 1985

Twinned in the late 1970's, this drive-in had space for 300 cars.



Mall Cinema 8 **OPEN**

2925 Vine
? 1975-

Opened in the early 1970's by CinemaNational with 2 screens, by 2000 it had 4 screens as it was taken over by Dickinson Theatres. By 2005 it was up to 8 screens.



Star **CLOSED**

? 1940-? 1950
525 seats

Strand **CLOSED**

1102 Main
? 1930-? 1955
640 seats

Owners:
1930 Wesco Corporation (Controlled by Fox)
1935-1955 Fox Midwest Amusement Corp.

VICTORIA

Gay **CLOSED**

Goetz St.
? 1950-? 1955
414 seats

GRAHAM COUNTY

HILL CITY

Frontier Stage **OPEN**

2005-

Hill City Drive-In **CLOSED**

? 1955

Midway **CLOSED**

? 1930
450 seats

Riverside Drive-In **CLOSED**

? 1961-? 1980

NESS COUNTY NESS CITY

Doris **CLOSED**

? 1930

IFS Jarvis **OPEN**

2005

Jarvis **CLOSED**

? 1990

Ness **CLOSED**

Main St.
? 1945-? 1955
400 seats

Snyder **CLOSED**

? 1935

Star Drive-In **CLOSED**

? 1955-? 1995
200 cars



RAMSON

Strand **CLOSED**

? 1930-? 1950
200 seats

UTICA

Olympic **CLOSED**

Closed by 1935

Star **CLOSED**

? 1945-? 1955
200 seats

Williams **CLOSED**

? 1940

HAYS MOVIE THEATRES

By Mike Rivest <http://movie-theatre.org/contact.htm>

NORTON COUNTY

ALMENA

Almenta **CLOSED**

? 1950-? 1955
275 seats

Lyric **CLOSED**

? 1930

Rabourne **CLOSED**

? 1930-? 1940

LENORA

Neal **CLOSED**

? 1940-? 1955
300 seats

Opera House **CLOSED**

? 1930-? 1935

NORTON

75 Airport Drive-In

CLOSED

? 1969-? 1975

Auditorium **CLOSED**

AKA: Norton

215 E. Main

? 1940

Commonwealth Theatres owned this theatre.

Cozy **CLOSED**

107 W. Main

? 1930-? 1950

563 seats

Owners:

1935 Central States Theater Company

1940-1950 Commonwealth Theatres

Norton **OPEN**

215 E. Main

1906-

702 seats

Renovated in 1947

Owned by Commonwealth Theatres

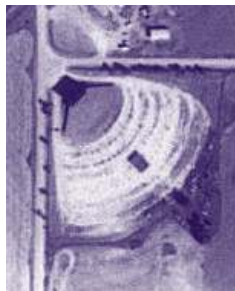
1950-1964



Sunset Drive-In **CLOSED**

? 1955-? 1985

Commonwealth Theatres owned this drive-in 1961-1964



PHILLIPS COUNTY

ARGA

Electra **CLOSED**

? 1930

LOGAN

Main Street **CLOSED**

? 1935-? 1955

275 seats

PHILLIPSBURG

Majestic **OPEN**

AKA: Winship Opera House,

724 4TH St.

1924-

B & B theatres owned it in 2000, which was twinned at this time.



Phillipsburg Drive-In

CLOSED

? 1955-? 1980

250 cars

HAYS MOVIE THEATRES

By Mike Rivest <http://movie-theatre.org/contact.htm>

ROOKS COUNTY

PALCO

Palco **CLOSED**
? 1950

PLAINSVILLE

Moore **CLOSED**
? 1930-? 1990
375 seats

SkiVue Drive-In **CLOSED**
? 1955-? 1975

STOCKTON

Nova **CLOSED**
4200 Main St.
? 1935-? 1955
473 seats

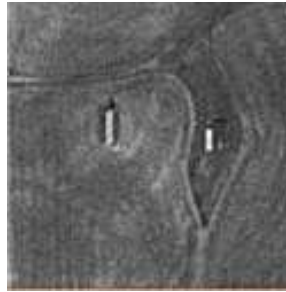
Park Drive-In **CLOSED**
? 1955-? 1985

RUSH COUNTY

LA CROSSE

Hilltop Drive-In **CLOSED**

HWY us 183
1953-1969, 1971-1973
385 cars
* 1953 opened
* 1966 screen destroyed by a tornado
* 1969 closed
* 1971 reopened by Sterling Bagby
* 1973 closed
* 1990 torn down in the late 1990s



La Crosse **CLOSED**
? 1930

Paramount **CLOSED**
8th and Elm
? 1935-? 1955
400 seats

MACCRACKEN

Garden **CLOSED**
Main St.
? 1940-? 1950
200 seats

Strand **CLOSED**
Closed by 1935

TREGO COUNTY

COLLYER

Seman **CLOSED**
? 1935-? 1940

WA KEENEY

Garden **CLOSED**
? 1930

Kelly **CLOSED**
Main St.
? 1935-? 1955
540 seats

Y Drive-In **CLOSED**
? 1955-? 1975

50 listings
September 3, 2006