



BASTROP MOVIE THEATRES

By Mike Rivest <http://movie-theatre.org/contact.htm>

CALDWELL PARISH

CLARKS

Liberty **CLOSED**
? 1940-? 1950
300 seats

COLUMBIA

Owl Drive-In **CLOSED**
? 1955-? 1975
250 cars

Ritz **CLOSED**

? 1940-? 1955
200 seats
Theaters Service Co. owned this theatre in 1955

EAST CARROLL PARISH

LAKE

PROVIDENCE

Ace **CLOSED**
? 1930-? 1935

Harlem **CLOSED**
? 1950-? 1955
Afro-American theatre.

Lake **CLOSED**
? 1940-? 1955
This Afro-American theatre had 600 seats

Lake Drive-In **CLOSED**
? 1955-? 1961
300 cars

FRANKLIN PARISH

WINNSBORO

Avon **CLOSED**
Closed by 1940

Dixie **CLOSED**
? 1955
600 seats

Harvard **CLOSED**
? 1955
Afro-American theatre.

Lion Drive-In **CLOSED**
? 1955-? 1975
325 seats

Princess **LIVE**
714 Prairie
1927-1985
* 1907 the building that house the theatre was built
* 1927 opened as a silent cinema. It was owned by George Elam
* 1930 upgraded for sound pictures
* Early 1940's theatre enlarged
* 1955 owned by Theaters Service Co.
* 1960 sold to Jack Pope
* 1985 closed when the cinemas in Monroe's Pecanland mall opened with 10 screens
* 1992 theatre was donated to the city of Winnsboro. It is now a live theatre.



WISNER

Luzienne **CLOSED**
? 1930

Wisner **CLOSED**
? 1930-? 1955
300 seats

BASTROP MOVIE THEATRES

By Mike Rivest <http://movie-theatre.org/contact.htm>

MADISON PARISH

TALLULAH

Bailey **CLOSED**

? 1935-? 1955

500 seats

Owners:

1940 Saenger Amusements

Company

1945-1950 Southern Amusements

1955 Theaters Service Co.

Afro-American Theatre.

Cameo **CLOSED**

? 1940-? 1945

Owners:

1940 Saenger Amusements

Company

1945-1945 Southern Amusements

Green Frog **CLOSED**

? 1950-? 1955

Afro-American theatre.

Richelieu **CLOSED**

? 1930

Ritz **CLOSED**

? 1945-? 1955

Afro-American theatre.

Roxy **CLOSED**

? 1945-? 1950

450 seats

Southern Amusements owned it in

1945

Star Drive-In **CLOSED**

? 1955-? 1975

250 cars

MOREHOUSE PARISH

BASTROP

Brown **CLOSED**

? 1955

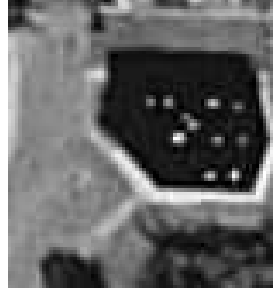
Grand 4 **OPEN**

AKA: Washington Square

314 N Franklin

2005-

Grand Theatres owns this cinema.



Rose **CLOSED**

103 E. Jefferson

? 1930-? 1975

700 seats

Owned by Gulf States Theatres, Inc.

1969-1975

Rose Drive-In **CLOSED**

? 1961-? 1975

400 cars

Swan **CLOSED**

114 W. Madison

? 1940-? 1950

477 seats

Washington Square 4

AKA: Grand 4

314 N Franklin

? 1985-2005

Owners:

1985 Joy's Theatres

1987 United Artists Theatre Circuit

1995 others

2000 Silver

2002 Regal Cinemas

RICHLAND PARISH

DELHI

Delhi **CLOSED**

Main St.

? 1940-? 1950

476 seats

MANGHAM

Liberty **CLOSED**

Closed by 1935

RAYVILLE

Gassen **CLOSED**

? 1955

Joy **CLOSED**

? 1940-? 1964

Joy's Theatres owned this 450-seat theatre.

Saea **CLOSED**

? 1935

BONITA

Village **CLOSED**

? 1950-? 1955

BASTROP MOVIE THEATRES

By Mike Rivest <http://movie-theatre.org/contact.htm>

TENSAS PARISH NEWELTON

Hawkins **CLOSED**

Main St.
? 1940-? 1955
300 seats

ST. JOSEPH

Blackman **CLOSED**

? 1935-? 1945

Bruno **CLOSED**

? 1950-? 1955
260 seats

TROY

Princess **CLOSED**

? 1930

WATERPROOF

Castleman **CLOSED**

? 1935

Home **CLOSED**

Main St.
? 1935-? 1955
300 seats

UNION PARISH BERNICE

Royal **CLOSED**

? 1935-? 1955
500 seats

FARMERSVILLE

Lunron **CLOSED**

? 1955

Palace **CLOSED**

? 1935-? 1940

Strand **CLOSED**

Main St.
? 1945-? 1955
475 seats
Heard, J. M. owned this theatre in
1945

Union **CLOSED**

? 1950

MARION

Marion **CLOSED**

? 1950-? 1955
378 seats

WEST CARROLL PARISH EPP'S

Epp's **CLOSED**

? 1945

OAK GROVE

Fiske **CLOSED**

? 1935-? 1990
350 seats

Baker Cinema I & II

CLOSED

? 1985

48 listings
November 12, 2006