

CARIBOU

United States of America | Maine | Caribou

AROOSTOOK COUNTY ASHLAND

Opera House **CLOSED**
? 1930-? 1961
320 seats
Owners:
-? 1955 Brooks Theater Circuit
-? 1961 Brooks, Charles A. H., Theatres

BRIDGEWATER

Bridgewater **CLOSED**
? 1935-? 1940

Community **CLOSED**

Main
? 1940-? 1950
200 seats

CARIBOU

Caribou **CLOSED**
126 Sweden
? 1955-? 1961
Owners:
-? 1955 Affiliated Theaters Corp.
(Lockwood and Gordon)
-? 1961 Daytz Theatre Enterprises
Corp.

Caribou Cinema Center 4
OPEN

126 Sweden
? 2000-

Cinema I & II **CLOSED**

Bennet Dr
? 1975
Bridgham Theatres, Inc owned this
theatre.

Dorseyland Drive-In **CLOSED**
? 1969-? 1980



Hilltop Drive-In **CLOSED**
Access Highway
? 1985

Polaris Drive-In **CLOSED**
? 1950-? 1985
200 cars

Powers **CLOSED**

Sweden
? 1912--? 1974
613 seats
Young, Harold E. Theater Booking
Service owned this theatre in -? 1955



Rudy **CLOSED**

Sweden
? 1940-? 1950
550 seats

EAGLE LAKE

Martin's Hall **CLOSED**

-? 1950-? 1961
250 seats
Owners:
-? 1955 Brooks Theater Circuit
-? 1961 Brooks, Charles A. H., Theatres

Pastime **CLOSED**

Closed by -? 1935

EASTON

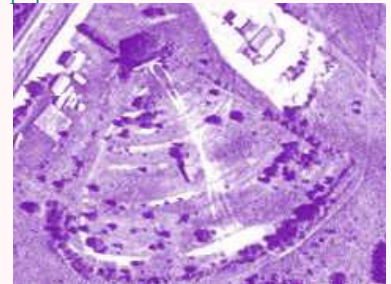
Easton **CLOSED**

? 1940-? 1945

ESTCOURT

Estcourt Drive-In **CLOSED**
Rue De La Frontière (American side of
the street.)
? 1980

This drive-in is accessible via the Quebec
(Canadian) side along with the small village.
An community theatre was opened in the -?
1970's on the Quebec side called Centre D'
Accueil. The power for this drive-in came
from Hydro Quebec. Nearly everyone had to
go through US customs before going to the
drive-in and the Canadian Customs on the
way back since the American side had an
population of 4.



FORT FAIRFIELD

Boundary Line Drive-In
CLOSED

? 1955-? 1985
300 cars
Daytz Theatre Enterprises Corp. owned
this drive-in -? 1955--? 1961

Hacker Hall **CLOSED**

? 1945
Mullins and Pinanski Theaters (Publix)
owned this drive-in

Paramount **CLOSED**

? 1935-? 1955
450 seats
Owners:
-? 1935--? 1945 Mullins and Pinanski
Theaters (Publix)
-? 1950--? 1955 New England Theaters,
Inc (Paramount)

Park **CLOSED**

? 1930-? 1940
Mullins and Pinanski Theaters (Publix)
owned this theatre -? 1935--? 1940

FORT KENT

Century **OPEN**

8 Hall
? 1990-2006, 2008-

Community **CLOSED**

Main
? 1940-? 1950
350 seats

Fort Kent Drive-In **CLOSED**

? 1955-? 1985
275 cars
Owners:
-? 1955 Brooks Theater Circuit
-? 1961 Brooks, Charles A. H., Theatres

Savoy **CLOSED**

Hall
? 1935-? 1961
418 seats
Owners:
-? 1955 Brooks Theater Circuit
-? 1961 Brooks, Charles A. H., Theatres

FRENCHVILLE

Hy-Way **CLOSED**

Main
? 1950

Madawaska Drive-In

CLOSED
? 1955-? 1985
300 cars
Daytz Theatre Enterprises Corp. owned this drive-in in -? 1961

GRAND ISLE

Town Hall (Port.) **CLOSED**
? 1940

HOULTON

Borderland Drive-In **CLOSED**

May 28, -? 1949--? 1985
400 cars
Young, Harold E. Theater Booking Service owned this drive-in in -? 1955



Houlton **CLOSED**

Market Sq
? 1945-? 1955
900 seats
Owners:
-? 1945 Mullins and Pinanski Theaters (Publix)
-? 1950 New England Theaters, Inc (Paramount)

Temple **OPEN**

Market Sq
? 1930-
720 seats
* Late -? 1920's opened
* Early -? 1980's 2 screens
Owners:
-? 1935--? 1945 Mullins and Pinanski Theaters (Publix)
-? 1950--? 1955 New England Theaters, Inc (Paramount)
-? 1961--? 1969 Bridgham, Lloyd, Theatres
-? 1975 Bridgham Theatres, Inc



ISLAND FALLS

Opera House **CLOSED**

Sewall
? 1940-? 1955
300 seats

KEEGAN

Wonderland **CLOSED**
? 1925
Kursen & Epstein owned this theatre.

LIMESTONE

Star **CLOSED**

Main
? 1935-? 1955
250 seats
Daytz Theatre Enterprises Corp. owned this theatre in -? 1955

MADAWASKA

Fox Cinema **OPEN**

1 Fox
? 1990-

Modern **CLOSED**

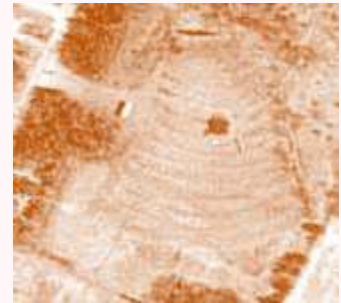
Main
? 1955-? 1961
B & L Theaters of St. John NB owned this theatre.

Roxy **CLOSED**

? 1935-? 1940
Graphic Theaters Circuit owned this theatre.

Skylit Drive-In **OPEN**

89 13th Av
? 1973-



State **CLOSED**

? 1945-? 1961
568 seats
B & L Theaters of St. John NB owned this 568-seat theatre.

MARS HILL

Hussey's **CLOSED**

Main
? 1935-? 1950

MARSARDIS

Town Hall **CLOSED**

? 1940
Portable Theatre.

MONTICELLO

Monticello **CLOSED**

? 1940-? 1945
Portable Theatre.

OAKFIELD

Oakfield **CLOSED**

? 1940-? 1955

225 seats

PORTAGE

Town Hall **CLOSED**

Lake

? 1950

PRESQUE ISLE

Aroostook Centre 8 **CLOSED**

830 Main

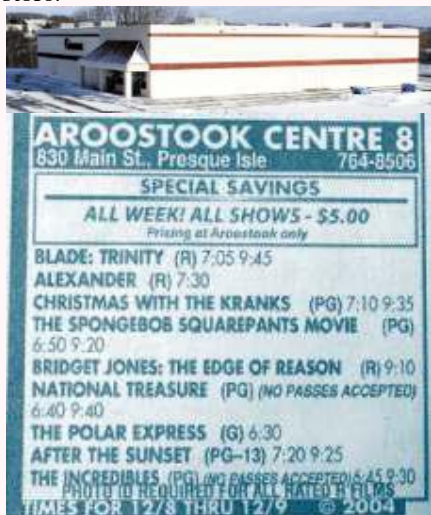
? 1998-2006

Owners:

-? 1998 Hoyts Cinema Corporation (Australia)

2003 Northeast Cinemas

This cinema closed due to a lack of patronage and the low traffic at the mall. It will be replaced by a Lowe's store.



Braden **OPEN**

? 1955-? 1961, 2008-

Owners:

-? 1955 Brooks Theater Circuit

-? 1961 Brooks, Charles A. H., Theatres

This theatre reopened with 3 cinemas in 2008.



Cinema **CLOSED**

? 1975

Hoyts Cinema Corporation owned this cinema.

Opera House **CLOSED**

? 1930-? 1955

Presque Island Drive-In **CLOSED**

? 1955-? 1985

400 cars

Owners:

-? 1955 Brooks Theater Circuit

-? 1961 Brooks, Charles A. H., Theatres

State **CLOSED**

State St.

? 1940-? 1955

B & L Theaters of St. John NB owned this 859-seat theatre.

SHERMAN MILLS

Opera House **CLOSED**

? 1935-? 1945

SHERMAN STATION

Sherman Station **CLOSED**

? 1940-? 1945

Portable theatre.

SMYRNA MILLS

I. O. O. F. Hall **CLOSED**

? 1935

Tarbell **CLOSED**

? 1940-? 1945

ST. FRANCIS

St. Francis Parish Hall

CLOSED

? 1950

350 seats

STOCKHOLM

Eureka **CLOSED**

Closed by -? 1935

Opera House **CLOSED**

Main

? 1950

175 seats

Stockholm **CLOSED**

? 1940-? 1945

VAN BUREN

Cyr's Drive-In **CLOSED**

? 1964-? 1975

Gayety **CLOSED**

? 1930-? 1955

630 seats

Marlyn **CLOSED**

Main

? 1955

Van Buren Drive-In **CLOSED**

? 1955-? 1985

376 cars

WASHBURN

Lyric **CLOSED**

? 1935

Town Hall **CLOSED**

? 1940

Portable theatre.

Washburn **CLOSED**

Bridge

? 1945-? 1950

281 seats

63 listings

January 6, 2007

Last update: 2008-12-29